



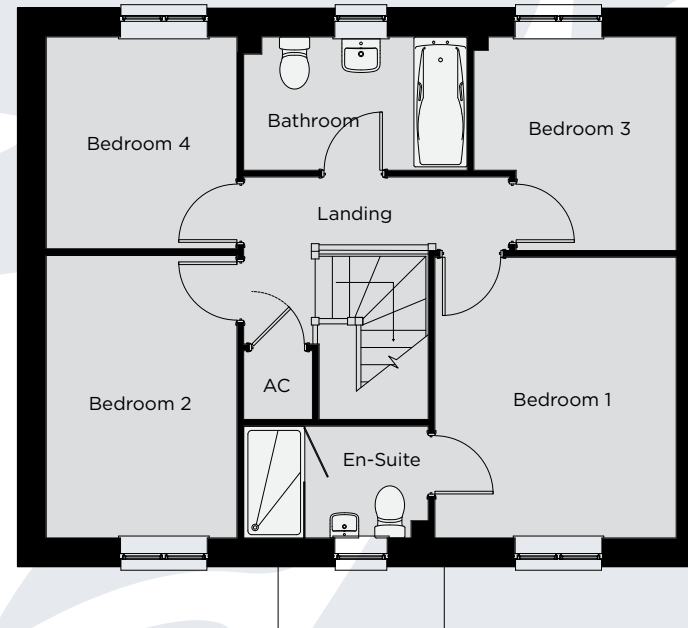
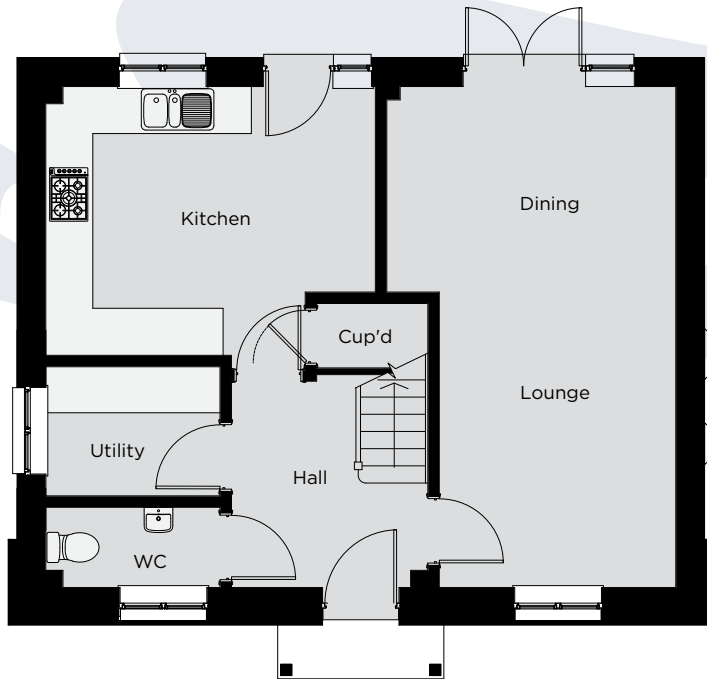
The Newslade

The Newslade

A four bedroom detached home (108 m² - 1,160 ft²)



Fothergill Park



Lounge/Dining	6.56m x 3.77m	21' 6" x 12' 4"
Kitchen/ Breakfast	4.31m x 3.51m	14' 1" x 11' 6"
Utility	2.28m x 1.50m	7' 6" x 4' 11"
Cloaks	2.28m x 1.05m	7' 6" x 3' 4"

Bedroom 1	3.66m x 3.15m	12' 0" x 10' 4"
En-Suite	2.41m x 1.45m	7' 11" x 4' 5"
Bedroom 2	3.66m x 2.49m	12' 0" x 8' 2"
Bedroom 3	2.77m x 2.65m	9' 1" x 8' 8"
Bedroom 4	2.77m x 2.49m	9' 1" x 8' 2"
Bathroom	2.92m x 1.74m	9' 7" x 5' 8"



WDL Homes

WDL Homes operate a policy of continuous product development and as such all particulars provided in this specification may change. Consequently all details should be regarded as general advice and as such cannot be relied upon as accurately describing any of the Specified Matters prescribed by any Order made under the Property Misdescriptions Act 1991, nor do the contents constitute any part of the contract or to be taken as an indication of warranty or guarantee on any property. Images are representative only and external elevations may vary from plot to plot

