



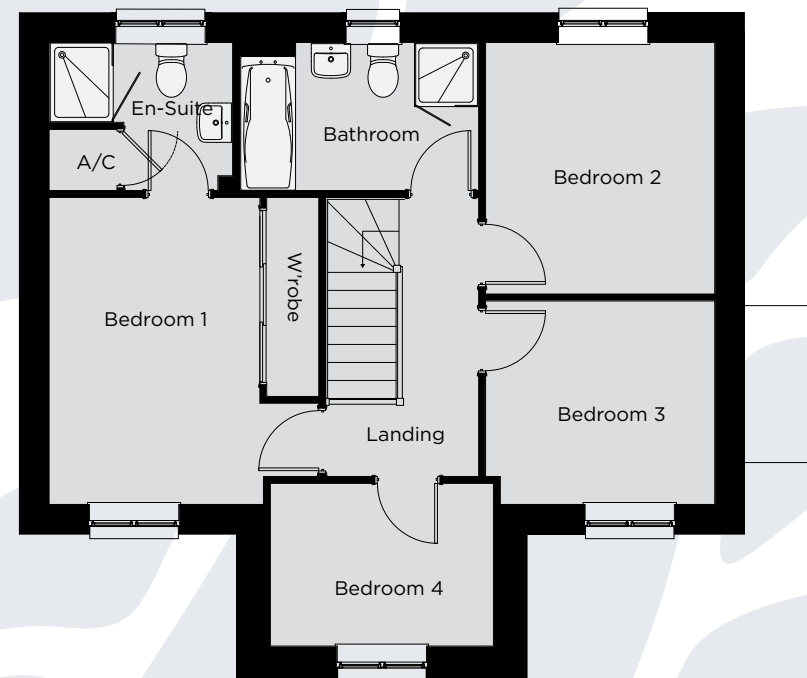
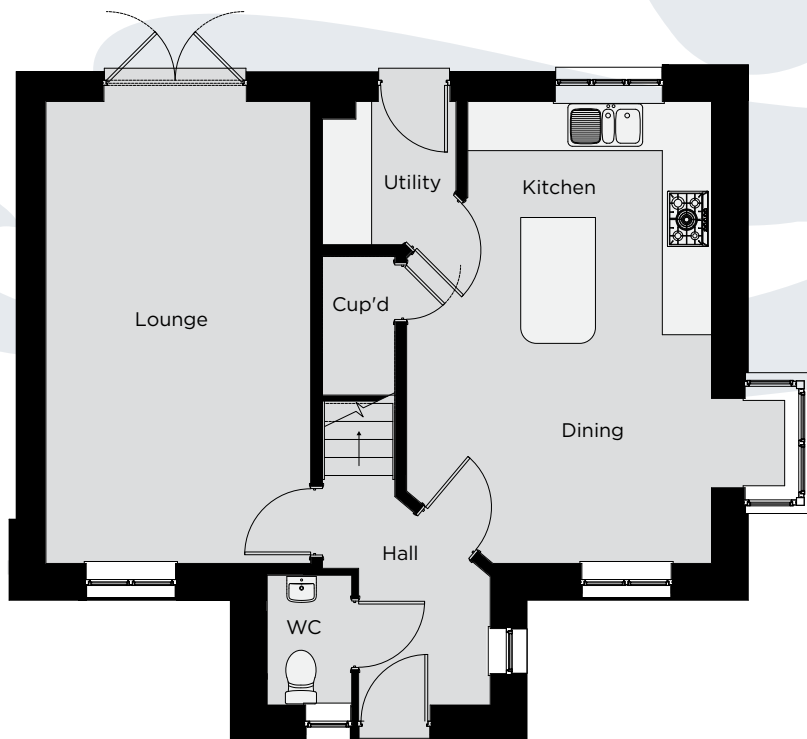
*The Laugharne*

# The Laugharne

A four bedroom detached home (112 m<sup>2</sup> - 1,205 ft<sup>2</sup>)



Fothergill Park



Lounge	5.87m x 3.36m	19' 3" x 11' 0"
Kitchen	3.88m x 2.76m	12' 9" x 9' 0"
Dining	4.52m x 3.12m	14' 10" x 10' 3"
Utility	1.80m x 1.69m	5' 11" x 5' 7"
Cloaks	1.63m x 1.00m	5' 3" x 3' 4"

Bedroom 1	3.88m x 3.40m	12' 9" x 11' 2"
En-Suite	2.30m x 1.87m	7' 6" x 6' 2"
Bedroom 2	3.18m x 2.92m	10' 5" x 9' 7"
Bedroom 3	2.92m x 2.57m	9' 7" x 8' 5"
Bedroom 4	2.84m x 2.06m	9' 4" x 6' 9"
Bathroom	3.01m x 1.87m	9' 10" x 6' 2"



WDL Homes

Some Laugharne plots have no bay window to ground floor. Please refer to site layout for details.

WDL Homes operate a policy of continuous product development and as such all particulars provided in this specification may change. Consequently all details should be regarded as general advice and as such cannot be relied upon as accurately describing any of the Specified Matters prescribed by any Order made under the Property Misdescriptions Act 1991, nor do the contents constitute any part of the contract or to be taken as an indication of warranty or guarantee on any property. Images are representative only and external elevations may vary from plot to plot

