

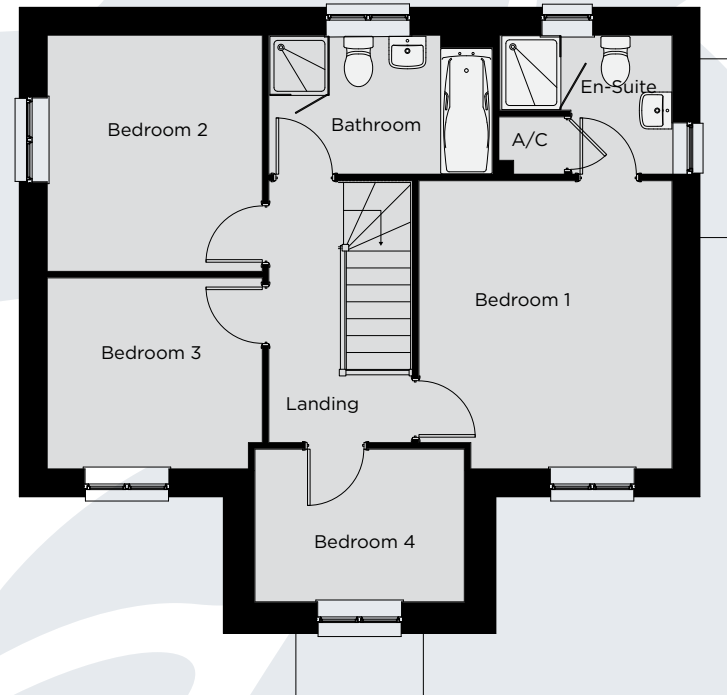
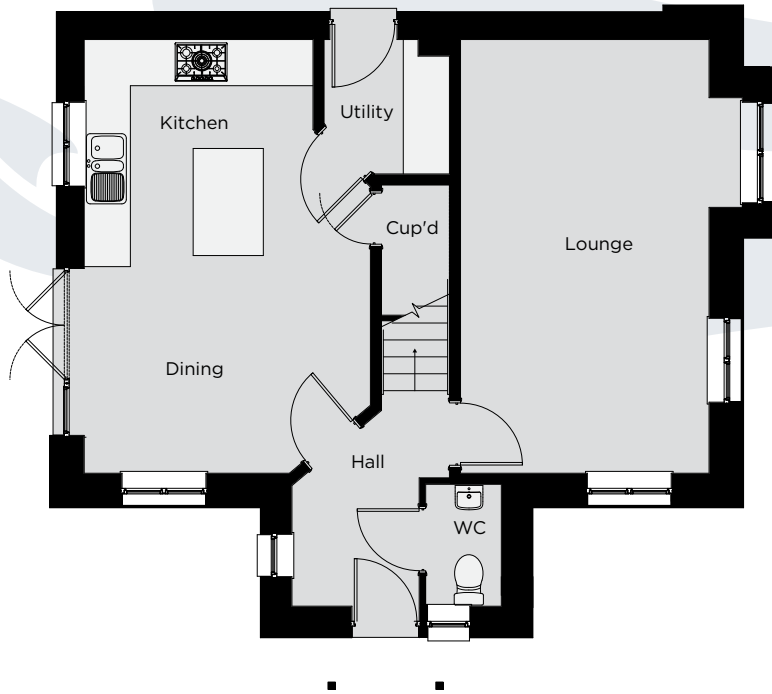
The Langennith

The Llangennith

A four bedroom detached home (112 m² - 1,205 ft²)



Fothergill Park



Lounge	5.87m x 3.36m	19' 3" x 11' 0"
Kitchen/Dining	5.87m x 3.94m	19' 3" x 12' 10"
Utility	1.63m x 1.00m	5' 3" x 3' 3"
Cloaks	1.80m x 1.69m	5' 11" x 5' 7"

Bedroom 1	3.88m x 3.40m	12' 9" x 11' 2"
En-Suite	2.30m x 1.87m	7' 6" x 6' 2"
Bedroom 2	3.18m x 2.92m	10' 5" x 9' 7"
Bedroom 3	2.92m x 2.57m	9' 7" x 8' 5"
Bedroom 4	2.84m x 2.06m	9' 4" x 6' 9"
Bathroom	3.01m x 1.87m	9' 10" x 6' 2"



WDL Homes

Some Llangennith plots have no bay window to ground floor. Please refer to site layout for details.

WDL Homes operate a policy of continuous product development and as such all particulars provided in this specification may change. Consequently all details should be regarded as general advice and as such cannot be relied upon as accurately describing any of the Specified Matters prescribed by any Order made under the Property Misdescriptions Act 1991, nor do the contents constitute any part of the contract or to be taken as an indication of warranty or guarantee on any property. Images are representative only and external elevations may vary from plot to plot





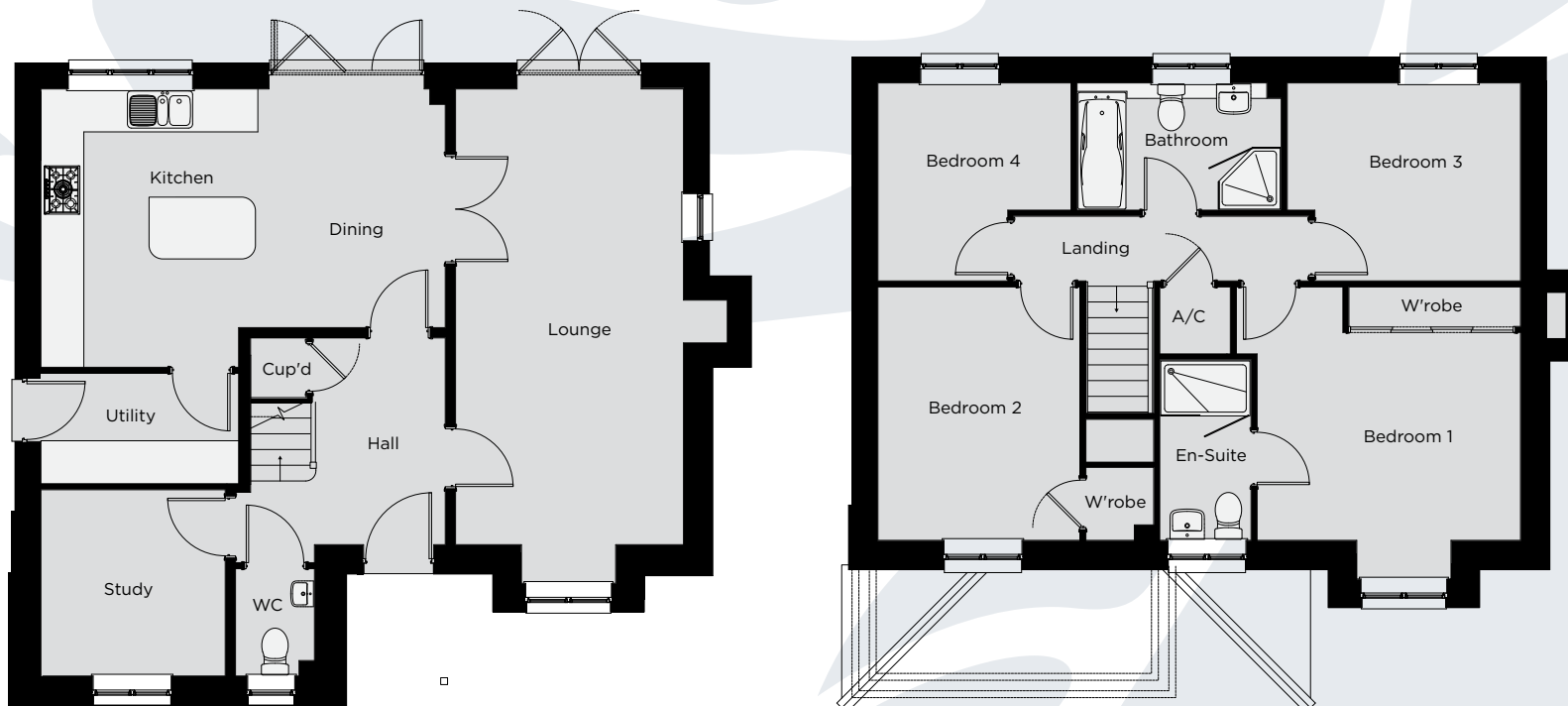
The Windsor

The Windsor

A four bedroom detached home (132 m² - 1,425 ft²)



Fothergill Park



Lounge	6.65m x 3.32m	21' 10" x 10' 11"
Study	2.75m x 2.75m	9' 0" x 9' 0"
Kitchen/Dining	5.90m x 4.05m	19' 4" x 13' 3"
Utility	2.97m x 1.60m	9' 9" x 5' 3"
Cloaks	1.57m x 1.05m	5' 2" x 3' 5"

Bedroom 1	3.85m x 3.74m	12' 7" x 12' 3"
En-Suite	2.64m x 1.35m	8' 8" x 4' 6"
Bedroom 2	3.70m x 2.95m	12' 2" x 9' 8"
Bedroom 3	3.41m x 2.89m	11' 2" x 9' 6"
Bedroom 4	2.89m x 2.82m	9' 6" x 9' 3"
Bathroom	2.99m x 1.87m	9' 9" x 6' 1"



WDL Homes

WDL Homes operate a policy of continuous product development and as such all particulars provided in this specification may change. Consequently all details should be regarded as general advice and as such cannot be relied upon as accurately describing any of the Specified Matters prescribed by any Order made under the Property Misdescriptions Act 1991, nor do the contents constitute any part of the contract or to be taken as an indication of warranty or guarantee on any property. Images are representative only and external elevations may vary from plot to plot





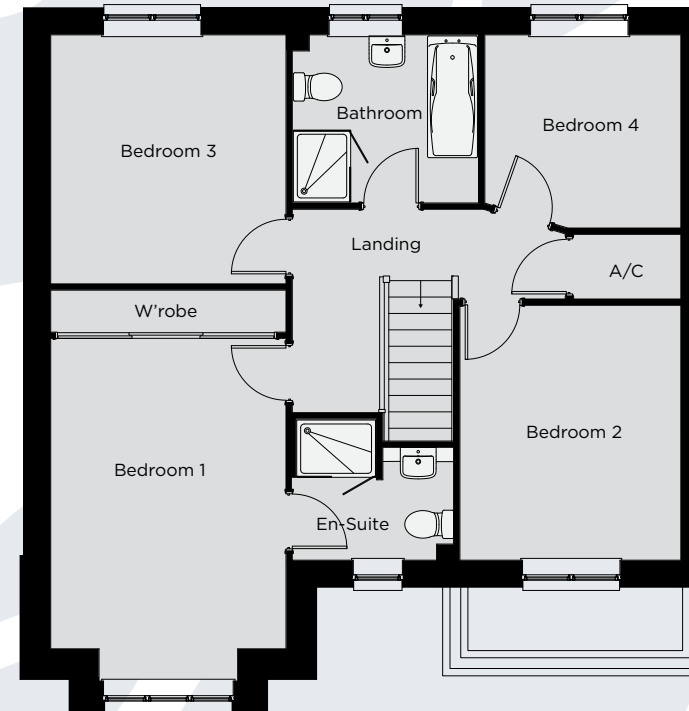
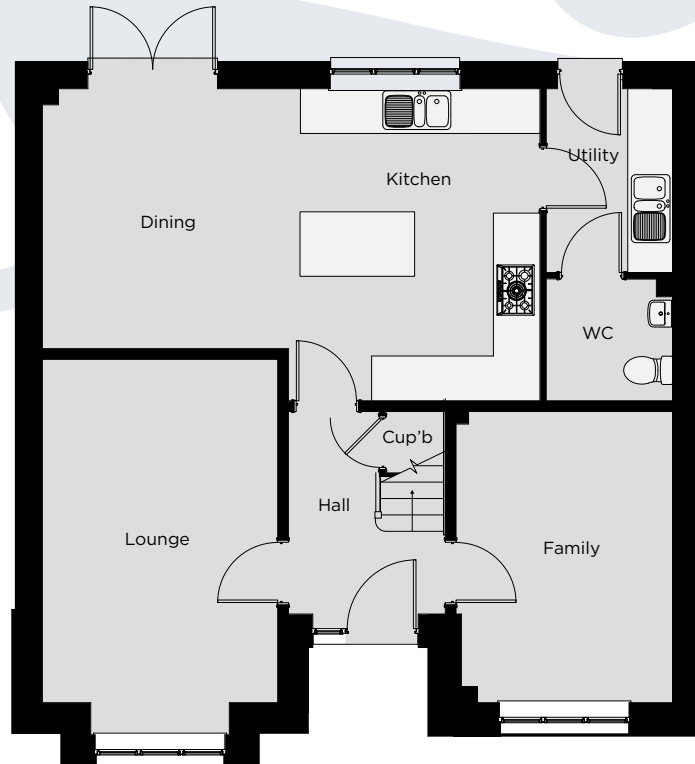
The Oxwich Bay

The Oxwich Bay

A four bedroom detached home (141 m² - 1,517 ft²)



Fothergill Park



Lounge	5.27m x 3.28m	17' 3" x 11' 3"
Family	4.05m x 3.02m	13' 3" x 9' 11"
Kitchen	4.00m x 3.54m	13' 1" x 11' 8"
Dining	3.63m x 3.43m	11' 11" x 11' 3"
Utility	2.57m x 1.75m	8' 4" x 5' 9"
Cloaks	1.75m x 1.70m	5' 9" x 5' 7"

Bedroom 1	4.98m x 3.36m	16' 4" x 11' 1"
En-Suite	2.00m x 2.00m	6' 7" x 6' 7"
Bedroom 2	3.60m x 3.12m	11' 10" x 10' 3"
Bedroom 3	3.50m x 3.36m	11' 6" x 11' 1"
Bedroom 4	2.75m x 2.67m	9' 0" x 8' 9"
Bathroom	2.65m x 2.35m	8' 8" x 7' 8"



WDL Homes

WDL Homes operate a policy of continuous product development and as such all particulars provided in this specification may change. Consequently all details should be regarded as general advice and as such cannot be relied upon as accurately describing any of the Specified Matters prescribed by any Order made under the Property Misdescriptions Act 1991, nor do the contents constitute any part of the contract or to be taken as an indication of warranty or guarantee on any property. Images are representative only and external elevations may vary from plot to plot





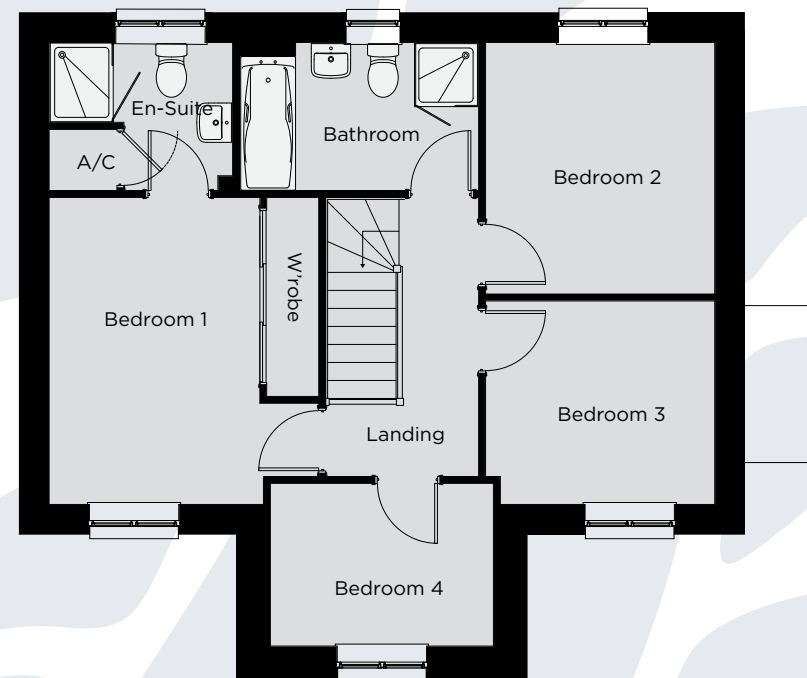
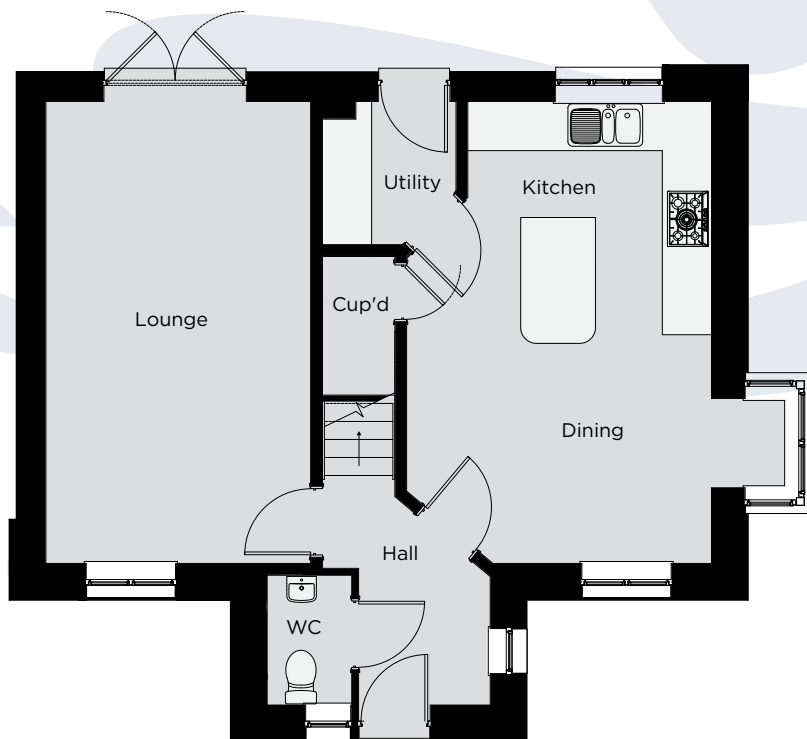
The Laugharne

The Laugharne

A four bedroom detached home (112 m² - 1,205 ft²)



Fothergill Park



Lounge	5.87m x 3.36m	19' 3" x 11' 0"
Kitchen	3.88m x 2.76m	12' 9" x 9' 0"
Dining	4.52m x 3.12m	14' 10" x 10' 3"
Utility	1.80m x 1.69m	5' 11" x 5' 7"
Cloaks	1.63m x 1.00m	5' 3" x 3' 4"

Bedroom 1	3.88m x 3.40m	12' 9" x 11' 2"
En-Suite	2.30m x 1.87m	7' 6" x 6' 2"
Bedroom 2	3.18m x 2.92m	10' 5" x 9' 7"
Bedroom 3	2.92m x 2.57m	9' 7" x 8' 5"
Bedroom 4	2.84m x 2.06m	9' 4" x 6' 9"
Bathroom	3.01m x 1.87m	9' 10" x 6' 2"



WDL Homes

Some Laugharne plots have no bay window to ground floor. Please refer to site layout for details.

WDL Homes operate a policy of continuous product development and as such all particulars provided in this specification may change. Consequently all details should be regarded as general advice and as such cannot be relied upon as accurately describing any of the Specified Matters prescribed by any Order made under the Property Misdescriptions Act 1991, nor do the contents constitute any part of the contract or to be taken as an indication of warranty or guarantee on any property. Images are representative only and external elevations may vary from plot to plot





The Ashford

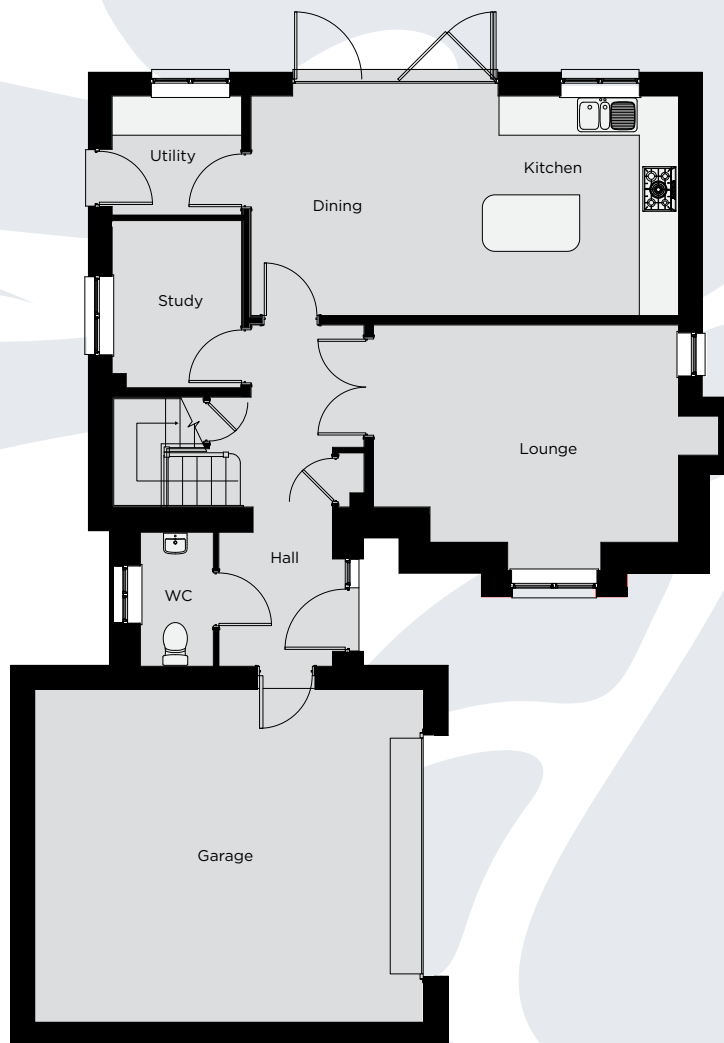
The Ashford

A four bedroom detached home (128 m² - 1,378 ft²)



Fothergill Park

Lounge	4.85m x 3.50m	15' 11" x 11' 6"
Study	2.67m x 2.06m	8' 9" x 6' 9"
Kitchen/Dining	6.80m x 3.50m	22' 4" x 11' 6"
Utility	2.06m x 1.90m	6' 9" x 6' 3"
Cloaks	2.10m x 1.17m	6' 10" x 3' 10"



Bedroom 1	3.97m x 3.13m	13' 2" x 10' 3"
En-Suite	2.56m x 1.35m	8' 5" x 4' 0"
Bedroom 2	3.26m x 2.97m	10' 8" x 9' 9"
Bedroom 3	3.65m x 2.66m	12' 0" x 8' 8"
Bedroom 4	2.86m x 2.27m	9' 5" x 7' 5"
Bathroom	2.60m x 1.99m	8' 6" x 6' 3"



WDL Homes

WDL Homes operate a policy of continuous product development and as such all particulars provided in this specification may change. Consequently all details should be regarded as general advice and as such cannot be relied upon as accurately describing any of the Specified Matters prescribed by any Order made under the Property Misdescriptions Act 1991, nor do the contents constitute any part of the contract or to be taken as an indication of warranty or guarantee on any property. Images are representative only and external elevations may vary from plot to plot





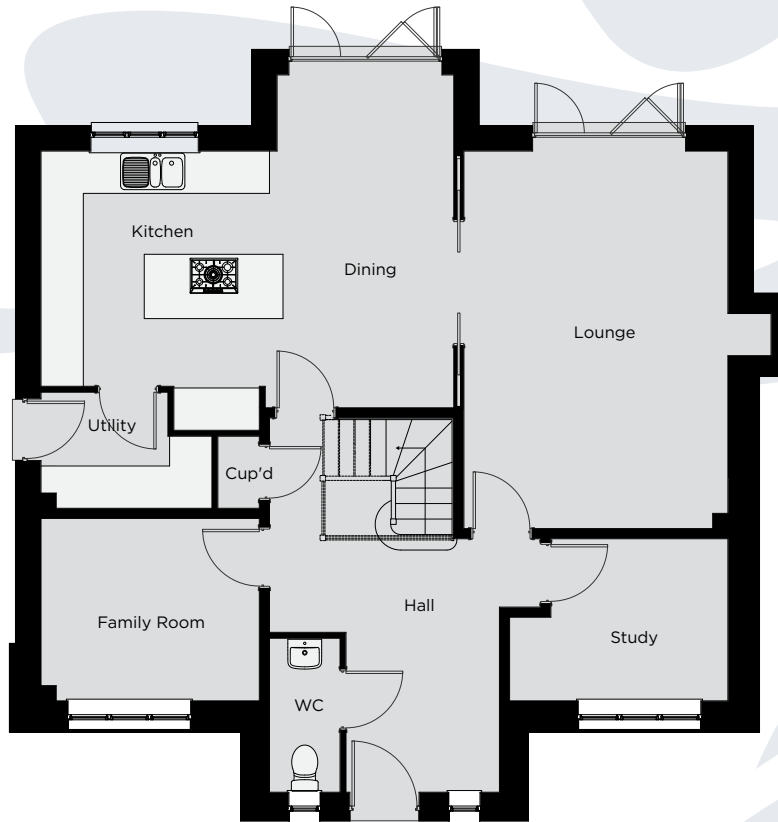
The Penderyn

The Penderyn

A four bedroom detached home (176 m² - 1,895 ft²)



Fothergill Park



Lounge	5.57m x 3.90m	18' 3" x 12' 9"
Kitchen/Dining	6.10m x 3.78m	20' 0" x 12' 5"
Family Room	3.21m x 2.78m	10' 6" x 9' 1"
Study	3.21m x 2.39m	10' 6" x 8' 8"
Utility	2.53m x 1.75m	8' 3" x 6' 9"
Cloaks	2.25m x 1.05m	7' 4" x 3' 5"

Bedroom 1	3.97m x 3.80m	13' 0" x 12' 6"
En-Suite	2.23m x 1.64m	7' 3" x 5' 3"
Bedroom 2	3.85m x 3.05m	12' 8" x 10' 0"
En-Suite	2.05m x 1.64m	6' 7" x 5' 3"
Bedroom 3	3.95m x 2.76m	12' 11" x 9' 0"
Bedroom 4	3.40m x 2.65m	11' 2" x 8' 8"
Bedroom 5	2.97m x 2.83m	9' 9" x 9' 3"
Bathroom	3.05m x 2.35m	10' 0" x 7' 9"



WDL Homes

WDL Homes operate a policy of continuous product development and as such all particulars provided in this specification may change. Consequently all details should be regarded as general advice and as such cannot be relied upon as accurately describing any of the Specified Matters prescribed by any Order made under the Property Misdescriptions Act 1991, nor do the contents constitute any part of the contract or to be taken as an indication of warranty or guarantee on any property. Images are representative only and external elevations may vary from plot to plot





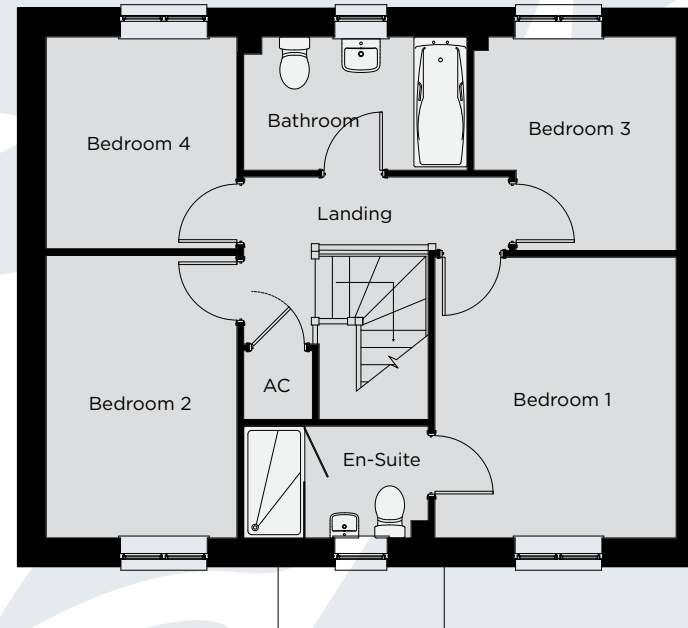
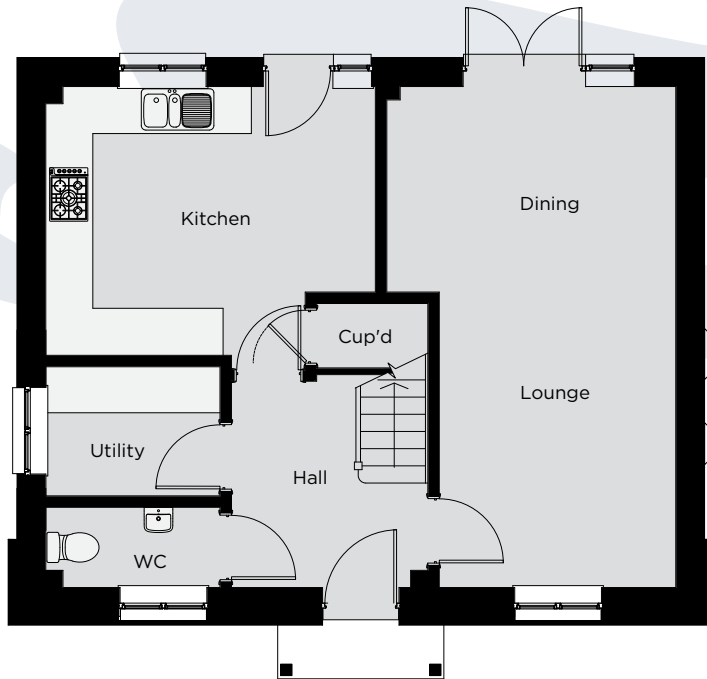
The Newslade

The Newslade

A four bedroom detached home (108 m² - 1,160 ft²)



Fothergill Park



Lounge/Dining	6.56m x 3.77m	21' 6" x 12' 4"
Kitchen/ Breakfast	4.31m x 3.51m	14' 1" x 11' 6"
Utility	2.28m x 1.50m	7' 6" x 4' 11"
Cloaks	2.28m x 1.05m	7' 6" x 3' 4"

Bedroom 1	3.66m x 3.15m	12' 0" x 10' 4"
En-Suite	2.41m x 1.45m	7' 11" x 4' 5"
Bedroom 2	3.66m x 2.49m	12' 0" x 8' 2"
Bedroom 3	2.77m x 2.65m	9' 1" x 8' 8"
Bedroom 4	2.77m x 2.49m	9' 1" x 8' 2"
Bathroom	2.92m x 1.74m	9' 7" x 5' 8"



WDL Homes

WDL Homes operate a policy of continuous product development and as such all particulars provided in this specification may change. Consequently all details should be regarded as general advice and as such cannot be relied upon as accurately describing any of the Specified Matters prescribed by any Order made under the Property Misdescriptions Act 1991, nor do the contents constitute any part of the contract or to be taken as an indication of warranty or guarantee on any property. Images are representative only and external elevations may vary from plot to plot

